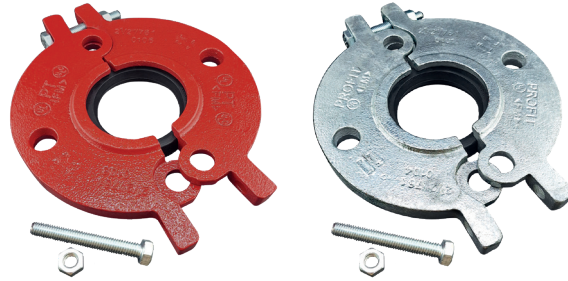
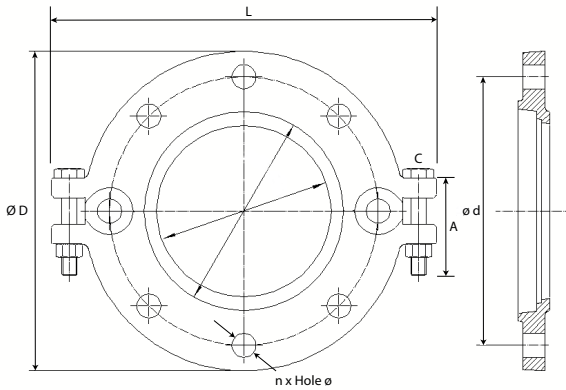


DRILLING ACCORDING TO:

- 1) ASME B16.5-CLASS 150
- 2) ASME B16.1-CLASS 125



Grooved split adapter flanges allow the connection between flanged and grooved end equipment.

Reference		Nominal size		Pipe Ø O.D.	Grooved split flange dimensions							Weight	Marking
Red	Galva	NPS inch	DN mm	mm	L mm	Ø D mm	Ø d mm	Thickness	Holes n	Hole Ø mm	Bolt size	kg	
GSF150R	GSF150G	2	50	60,3	210	155	121	25	4	18	5/8"	1,90	L991
GSF150R	GSF150G	2½	65	73,0	240	180	140	25	4	18	5/8"	2,21	L991
GSF150R	GSF150G	3	80	88,9	250	190	153	25	4	18	5/8"	2,55	L991
GSF150R	GSF150G	4	100	114,3	278	230	191	25	8	18	5/8"	3,30	L991
GSF150R	GSF150G	5	125	141,3	310	255	216	25	8	22	¾"	4,35	L991
GSF150R	GSF150G	6	150	168,3	336	280	241	25	8	22	¾"	4,78	L991
GSF150R	GSF150G	8	200	219,1	398	345	299	25	8	22	¾"	6,58	L991
GSF150R	GSF150G	10	250	273,0	503	405	362	25	12	24	7/8"	11,25	L991
GSF150R	GSF150G	12	300	323,9	580	485	432	25	12	24	7/8"	16,75	L991

Material specifications

Housing: ductile iron conform to ASTM A536 GR 65-45-12.

Coating: red paint coating RAL 3000, EPD epoxy coating (any other colour on request).

Bolts and nuts: medium carbon steel, zinc electroplated, quenched and tempered.

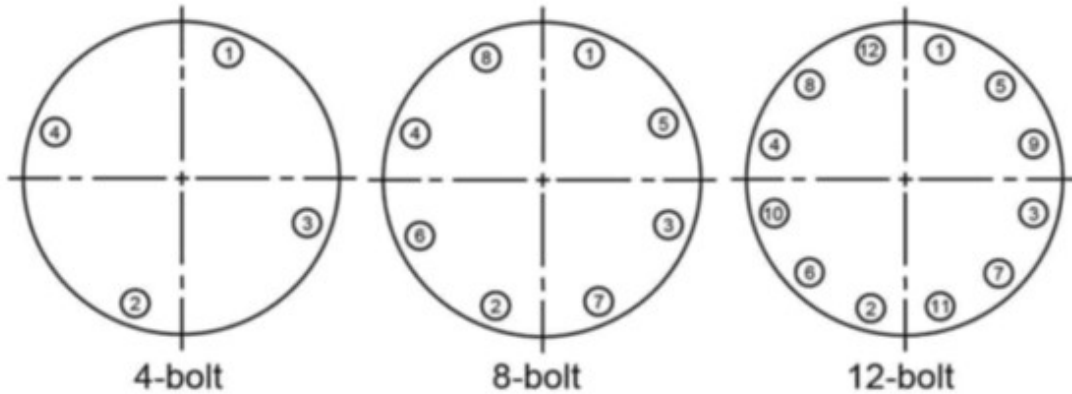
Rubber gasket: EPDM gaskets dispose of the international certifications and have undergone the aging test at 110°C / 230°F during a period of 45 days / 1080 hours and the frozen test at -40°C / -40°F during a period of 4 days / 96 hours.

Working pressure

2,07 MPa / 20,7 bar / 300 psi

BOLT TORQUE SEQUENCE

(Bolt N°1 is the bolt closest to biggest gap between the 2 flanges)



Our advice =

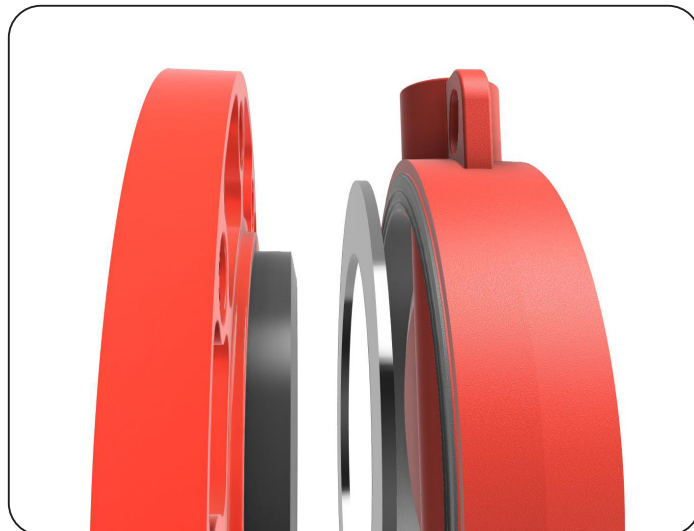
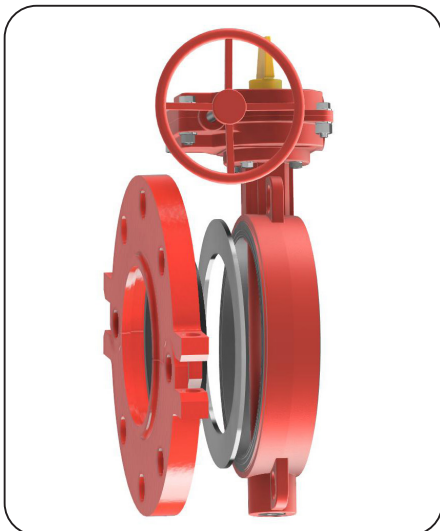
- STEP 1 = 30%
- STEP 2 = 60%
- STEP 3 = 100%

BOLT TORQUE = depends on gasket type used and bolt material grade.

Optional item

Ring GSF

When installing GSF against a rubber facing (rubber lined piping, rubber faced flange, wafer butterfly with rubber facing) there is the need of installing an extra insertion steel ring type RING GSF.



GENERAL INFO

- Installers should be trained or experienced to install and understand the product.
- Read and understand all technical datasheets and installation instructions before attempting to install, remove or adjust any Profit piping products.
- Depressurise and drain the sprinkler installation system before attempting to install, remove or adjust any Profit piping products.
- Never work on piping-systems that are pressurized and /or filled with water.
- Use the necessary Personal Protection Equipment (PPE) to avoid personal injury (helmet, safety shoes and goggles, Profit gloves).



- Profit reserves the right to change specifications, designs and/or standard equipment without notice and without incurring in any obligations.
- Profit red coated products are intended for piping with indoor application (EN 12944-2 corrosivity category C1 & C2). For outdoor installations near the sea (corrosivity category C3) we advise the use of our hot dip galvanised couplings and fittings. For application in corrosivity category C4 (higher salinity climate) or higher, please contact info@pipinglogistics.eu.
- Pressure ratings listed for fire sprinkler applications are CWP (cold working pressure) or MWP (maximum working pressure) at a maximum service temperature of 66°C. This rating may occasionally differ from maximum working pressure listed and / or approved by UL and / or FM, as testing conditions and test pipes can differ. For more information, please contact info@pipinglogistics.eu.
- Maximum working pressure listed is the total of internal and external pressures based on standard weight (ANSI) steel pipe and standard roll or cut groove in accordance with Profit specifications. For more information, please contact info@pipinglogistics.eu.
- For one time field test only, the maximum joint working pressure may be increased by 150% the figure shown.

Failure to follow these instructions could result in death or serious injury and property damage.

We advise to always store our products in closed and dry environments, the products do not need any specific maintenance once installed on an aboveground sprinkler installation.

REVISION TABLE

Date	△	Notes
04/06/2025		Initial release.